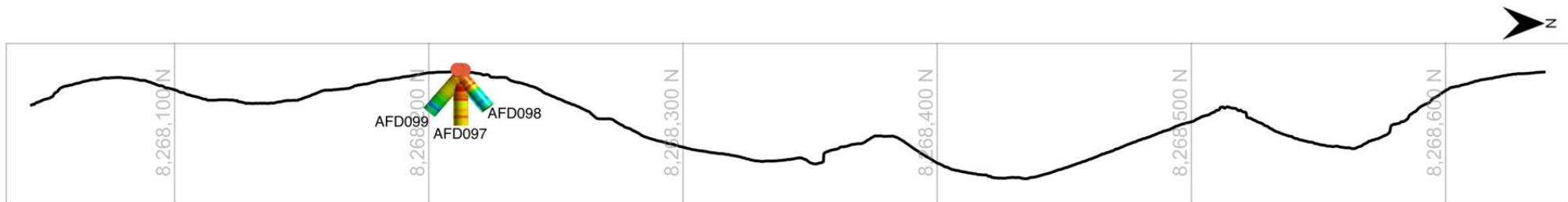


Section 900E - Ag
 ● Current collars
 ● Previous collars

Hole	From	To	Width (m)	Ag g/t	Cu %	Mn %	Zn %
AFD097	0.00	11.80	10.40	56	1.12	11.57	0.33
AFD098	0.00	6.30	6.30	46	0.70	10.93	0.37
AFD099	0.00	8.30	8.30	36	0.88	15.58	0.32

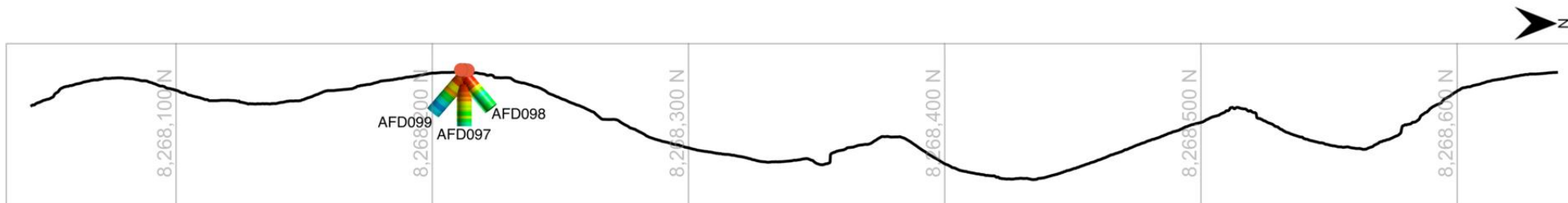


0 50 100 m

Section 900E - Cu

- Current collars
- Previous collars

Hole	From	To	Width (m)	Ag g/t	Cu %	Mn %	Zn %
AFD097	0.00	11.80	10.40	56	1.12	11.57	0.33
AFD098	0.00	6.30	6.30	46	0.70	10.93	0.37
AFD099	0.00	8.30	8.30	36	0.88	15.58	0.32

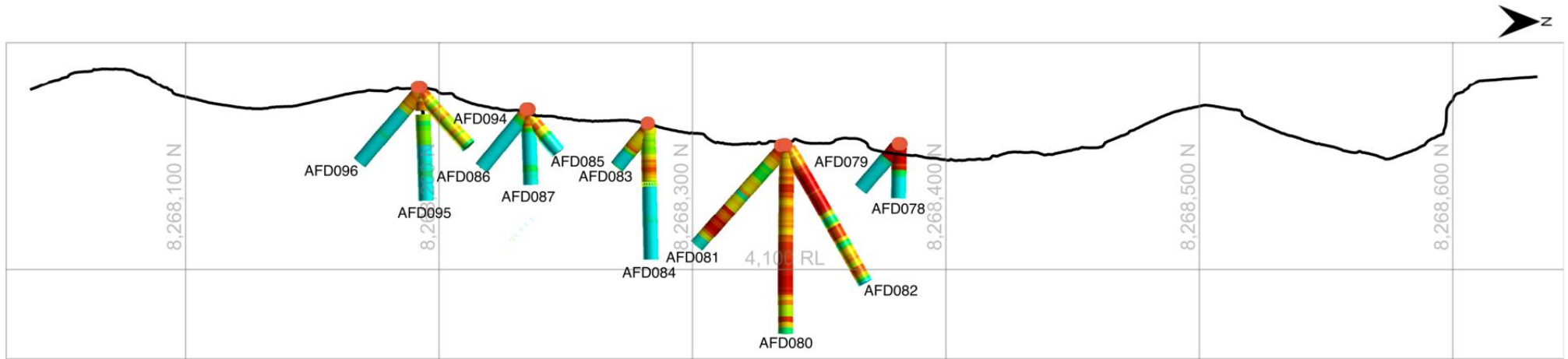


0 50 100 m

Section 900E - Mn

- Current collars
- Previous collars

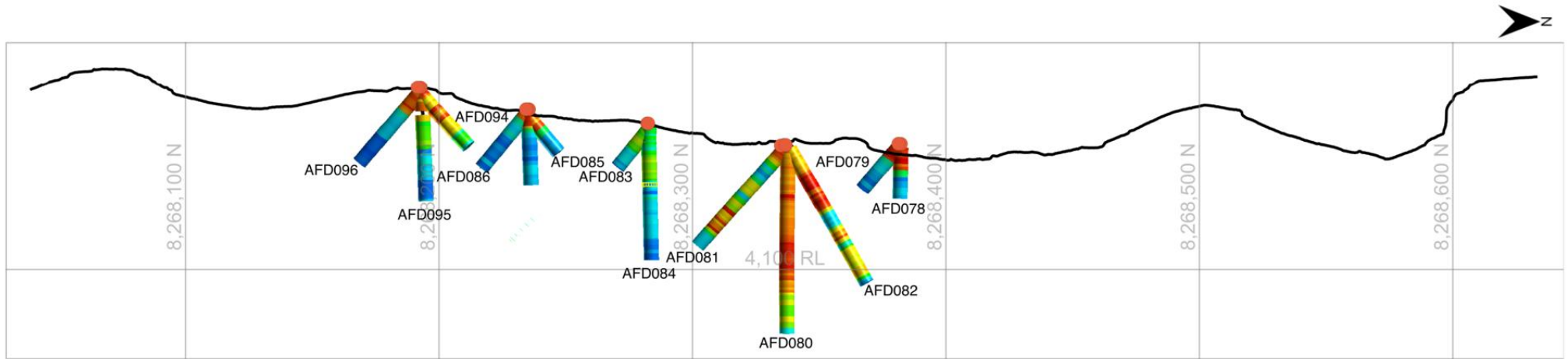
Hole	From	To	Width (m)	Ag g/t	Cu %	Mn %	Zn %
AFD097	0.00	11.80	10.40	56	1.12	11.57	0.33
AFD098	0.00	6.30	6.30	46	0.70	10.93	0.37
AFD099	0.00	8.30	8.30	36	0.88	15.58	0.32



Section 950E - Ag

- Current collars
- Previous collars

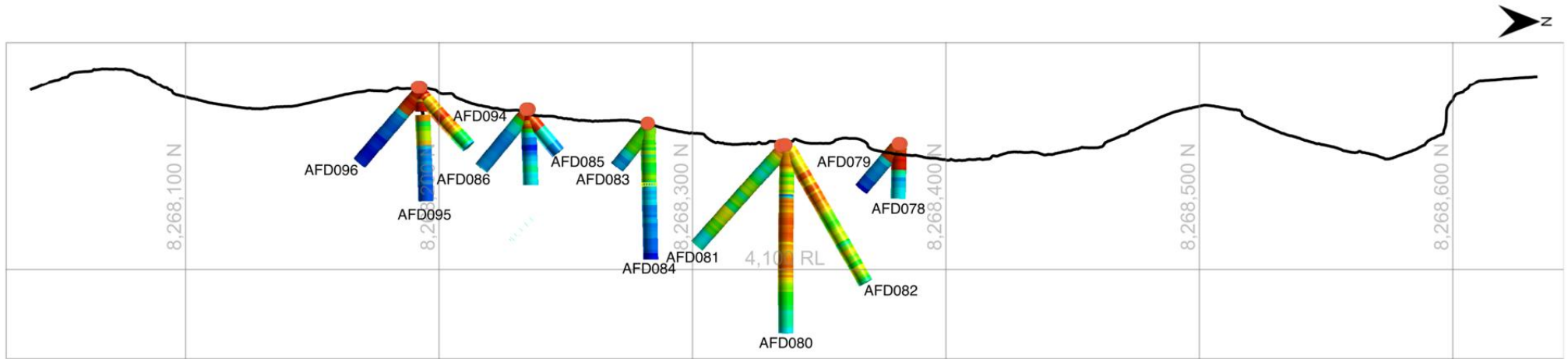
Hole	From	To	Width (m)	Ag g/t	Cu %	Mn %	Zn %
AFD078	0.00	9.10	9.10	447	1.85	17.96	0.62
AFD079	0.00	6.00	6.00	407	1.93	11.90	0.43
AFD080	0.00	59.45	59.45	114	0.90	3.95	0.10
Inc.	38.10	59.45	21.35	212	1.18	3.17	0.07
AFD081	0.00	5.40	5.40	130	0.99	3.87	0.14
AFD081	32.20	45.65	13.45	395	0.74	0.85	0.06
Inc.	37.80	44.45	6.65	695	0.80	0.67	0.05
AFD082	0.00	30.00	30.00	269	1.15	4.21	0.21
Inc.	12.80	28.10	15.30	439	1.81	5.85	0.28
AFD082	36.55	41.90	5.35	107	0.51	0.90	0.06
AFD083	13.20	19.20	6.00	63	0.08	0.46	0.03
AFD084	0.00	5.70	5.70	61	0.04	0.55	0.05
AFD085	0.00	6.00	6.00	82	1.79	14.43	0.29
AFD086	0.00	3.00	3.00	36	0.77	8.95	0.27
AFD087	0.00	8.40	8.40	54	1.16	15.39	0.41
AFD094	0.00	12.00	10.50	44	0.74	17.04	0.33
AFD095	0.00	10.40	10.40	39	0.89	15.83	0.34
AFD096	0.00	15.60	15.60	44	0.82	9.84	0.25



Section 950E - Cu

- Current collars
- Previous collars

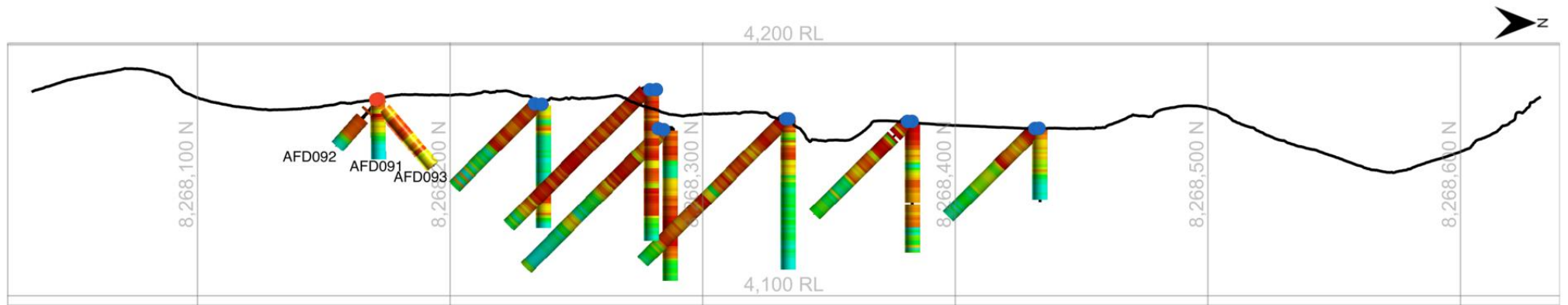
Hole	From	To	Width (m)	Ag g/t	Cu %	Mn %	Zn %
AFD078	0.00	9.10	9.10	447	1.85	17.96	0.62
AFD079	0.00	6.00	6.00	407	1.93	11.90	0.43
AFD080	0.00	59.45	59.45	114	0.90	3.95	0.10
Inc.	38.10	59.45	21.35	212	1.18	3.17	0.07
AFD081	0.00	5.40	5.40	130	0.99	3.87	0.14
AFD081	32.20	45.65	13.45	395	0.74	0.85	0.06
Inc.	37.80	44.45	6.65	695	0.80	0.67	0.05
AFD082	0.00	30.00	30.00	269	1.15	4.21	0.21
Inc.	12.80	28.10	15.30	439	1.81	5.85	0.28
AFD082	36.55	41.90	5.35	107	0.51	0.90	0.06
AFD083	13.20	19.20	6.00	63	0.08	0.46	0.03
AFD084	0.00	5.70	5.70	61	0.04	0.55	0.05
AFD085	0.00	6.00	6.00	82	1.79	14.43	0.29
AFD086	0.00	3.00	3.00	36	0.77	8.95	0.27
AFD087	0.00	8.40	8.40	54	1.16	15.39	0.41
AFD094	0.00	12.00	10.50	44	0.74	17.04	0.33
AFD095	0.00	10.40	10.40	39	0.89	15.83	0.34
AFD096	0.00	15.60	15.60	44	0.82	9.84	0.25



Section 950E - Mn

- Current collars
- Previous collars

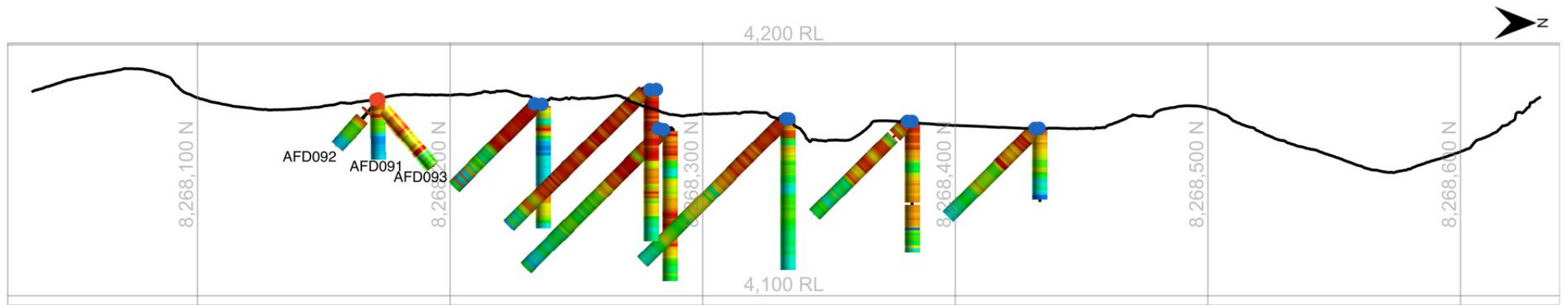
Hole	From	To	Width (m)	Ag g/t	Cu %	Mn %	Zn %
AFD078	0.00	9.10	9.10	447	1.85	17.96	0.62
AFD079	0.00	6.00	6.00	407	1.93	11.90	0.43
AFD080	0.00	59.45	59.45	114	0.90	3.95	0.10
Inc.	38.10	59.45	21.35	212	1.18	3.17	0.07
AFD081	0.00	5.40	5.40	130	0.99	3.87	0.14
AFD081	32.20	45.65	13.45	395	0.74	0.85	0.06
Inc.	37.80	44.45	6.65	695	0.80	0.67	0.05
AFD082	0.00	30.00	30.00	269	1.15	4.21	0.21
Inc.	12.80	28.10	15.30	439	1.81	5.85	0.28
AFD082	36.55	41.90	5.35	107	0.51	0.90	0.06
AFD083	13.20	19.20	6.00	63	0.08	0.46	0.03
AFD084	0.00	5.70	5.70	61	0.04	0.55	0.05
AFD085	0.00	6.00	6.00	82	1.79	14.43	0.29
AFD086	0.00	3.00	3.00	36	0.77	8.95	0.27
AFD087	0.00	8.40	8.40	54	1.16	15.39	0.41
AFD094	0.00	12.00	10.50	44	0.74	17.04	0.33
AFD095	0.00	10.40	10.40	39	0.89	15.83	0.34
AFD096	0.00	15.60	15.60	44	0.82	9.84	0.25



Section 1000E - Ag

- Current collars
- Previous collars

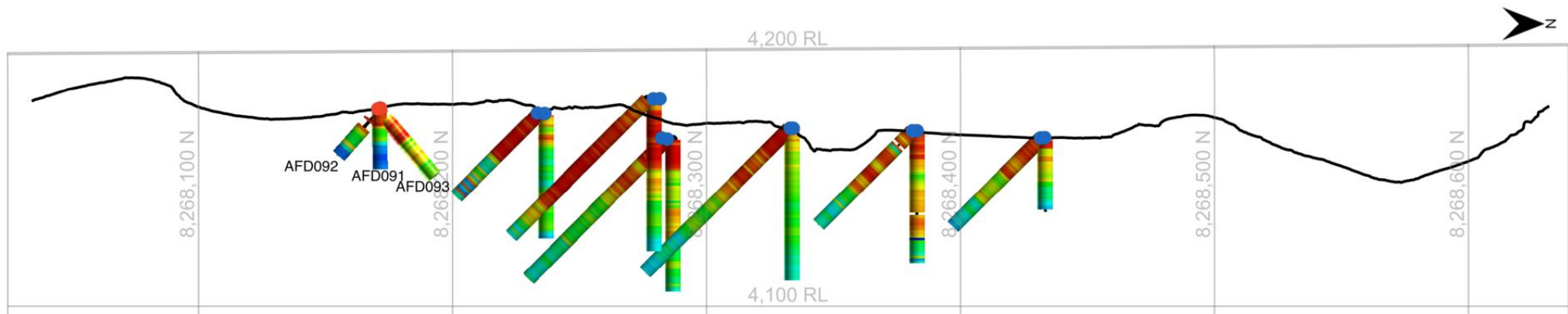
Hole	From	To	Width (m)	Ag g/t	Cu %	Mn %	Zn %
AFD091	0.00	7.70	7.70	145	0.87	14.36	0.40
AFD092	0.00	13.10	5.60	80	0.66	10.60	0.29
AFD093	0.00	19.35	17.55	77	0.67	9.57	0.26



Section 1000E - Cu

- Current collars
- Previous collars

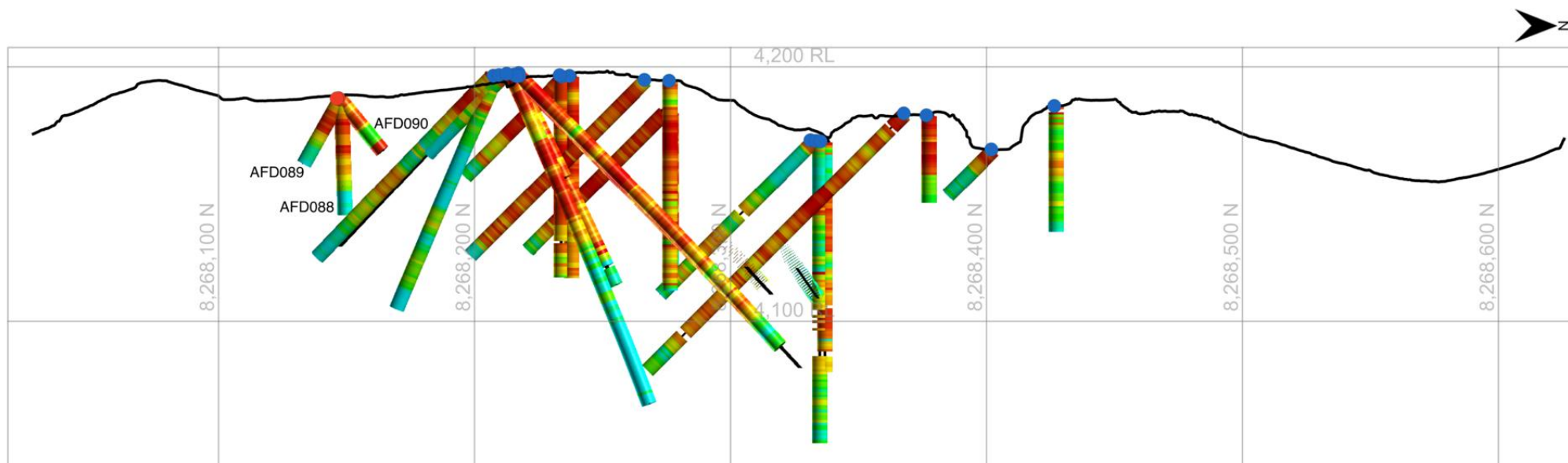
Hole	From	To	Width (m)	Ag g/t	Cu %	Mn %	Zn %
AFD091	0.00	7.70	7.70	145	0.87	14.36	0.40
AFD092	0.00	13.10	5.60	80	0.66	10.60	0.29
AFD093	0.00	19.35	17.55	77	0.67	9.57	0.26



Section 1000E - Mn

- Current collars
- Previous collars

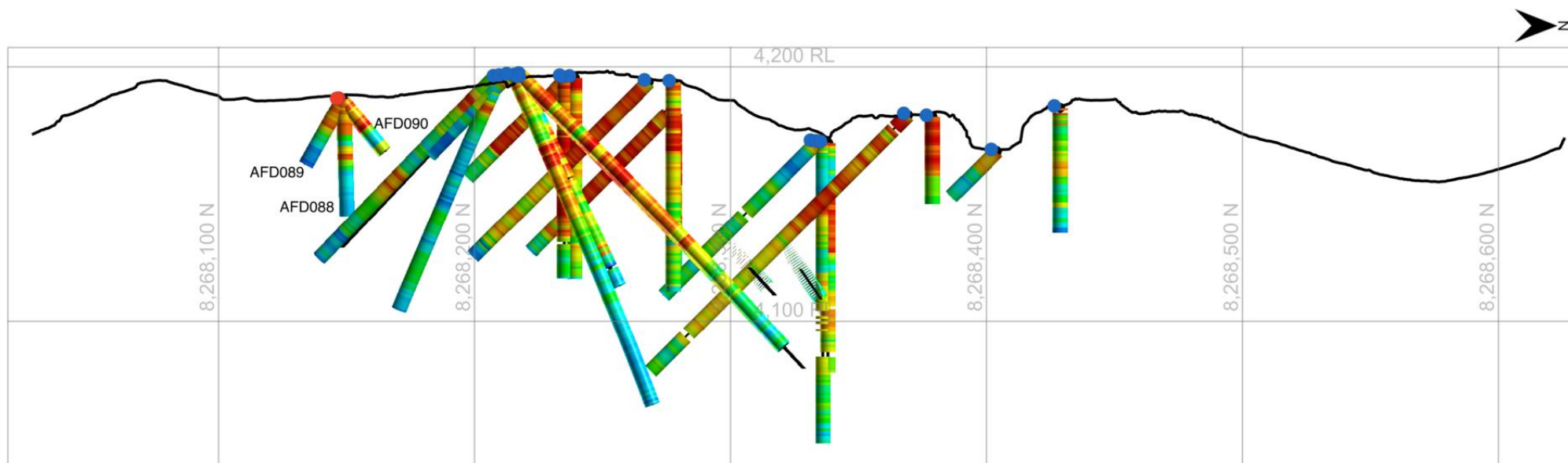
Hole	From	To	Width (m)	Ag g/t	Cu %	Mn %	Zn %
AFD091	0.00	7.70	7.70	145	0.87	14.36	0.40
AFD092	0.00	13.10	5.60	80	0.66	10.60	0.29
AFD093	0.00	19.35	17.55	77	0.67	9.57	0.26



Hole	From	To	Width (m)	Ag g/t	Cu %	Mn %	Zn %
AFD088	0.00	23.40	23.40	102	0.53	5.79	0.19
AFD089	0.00	14.60	14.60	131	0.93	10.59	0.29
AFD090	1.00	15.10	14.10	75	1.00	8.72	0.27

Section 1050E - Ag

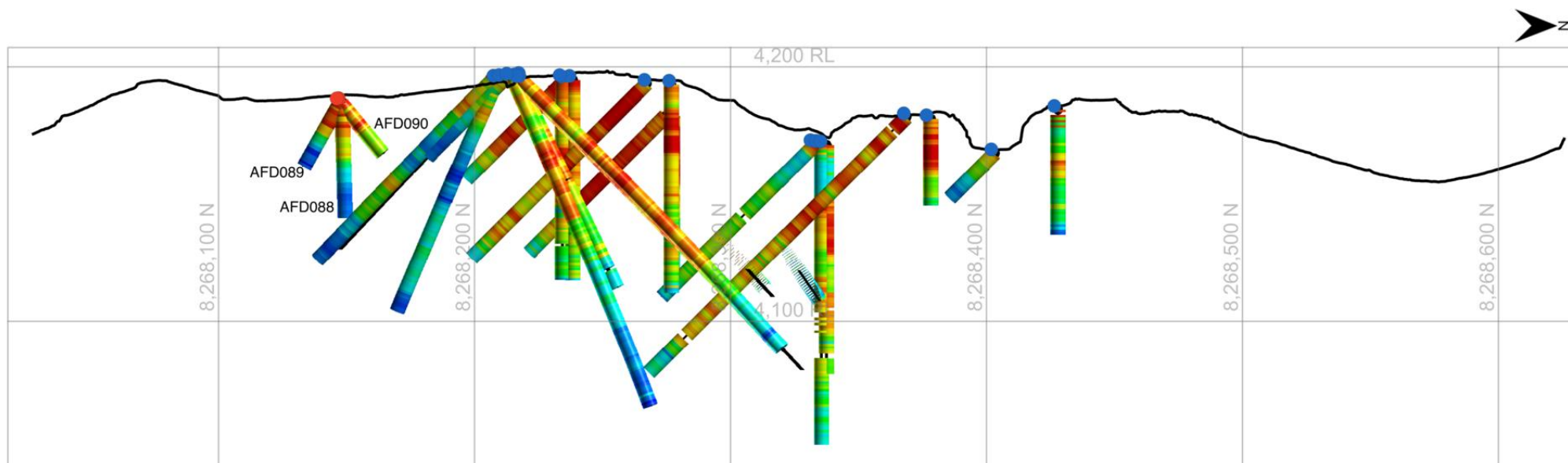
- Current collars
- Previous collars



Hole	From	To	Width (m)	Ag g/t	Cu %	Mn %	Zn %
AFD088	0.00	23.40	23.40	102	0.53	5.79	0.19
AFD089	0.00	14.60	14.60	131	0.93	10.59	0.29
AFD090	1.00	15.10	14.10	75	1.00	8.72	0.27

Section 1050E - Cu

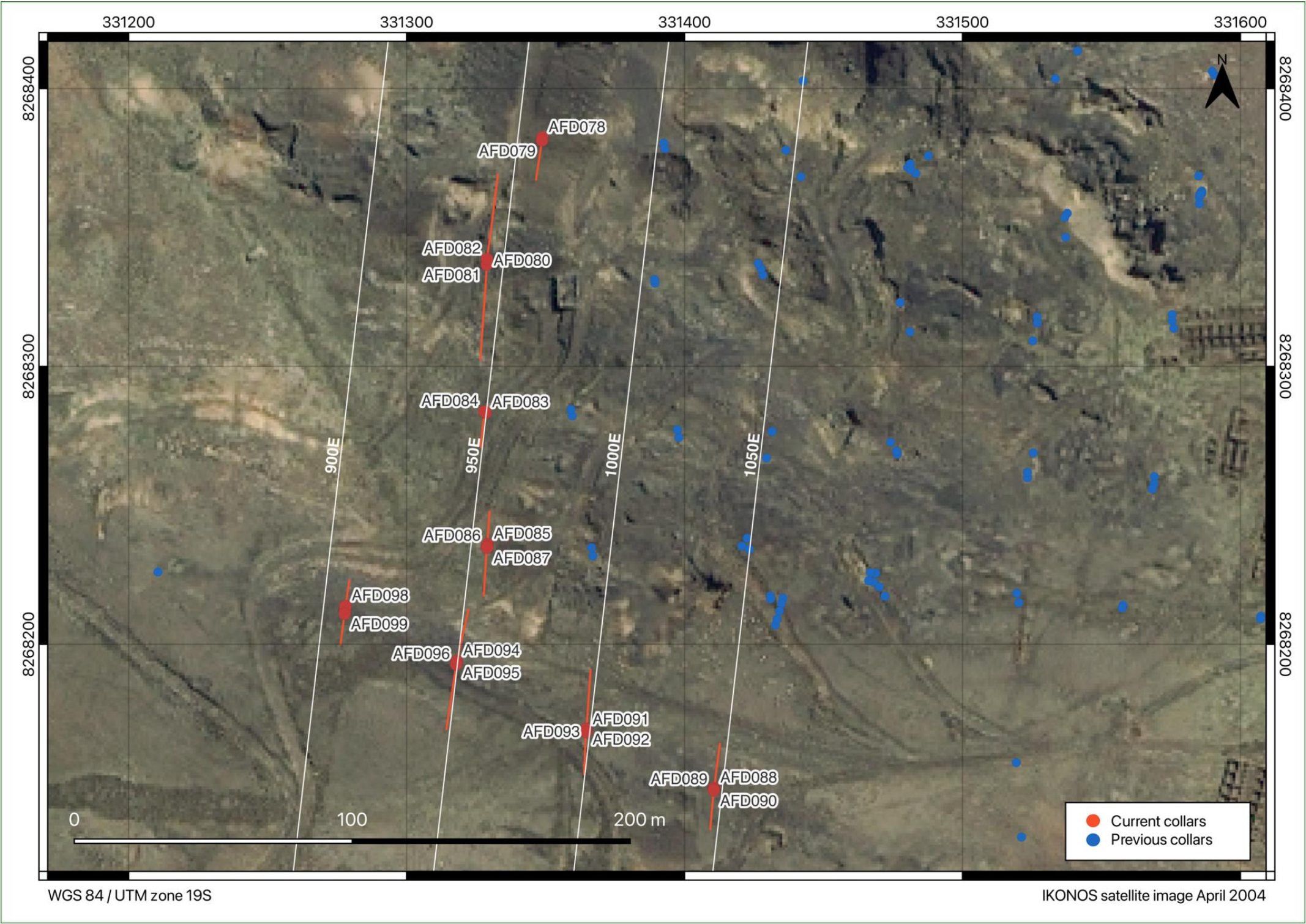
- Current collars
- Previous collars



Hole	From	To	Width (m)	Ag g/t	Cu %	Mn %	Zn %
AFD088	0.00	23.40	23.40	102	0.53	5.79	0.19
AFD089	0.00	14.60	14.60	131	0.93	10.59	0.29
AFD090	1.00	15.10	14.10	75	1.00	8.72	0.27

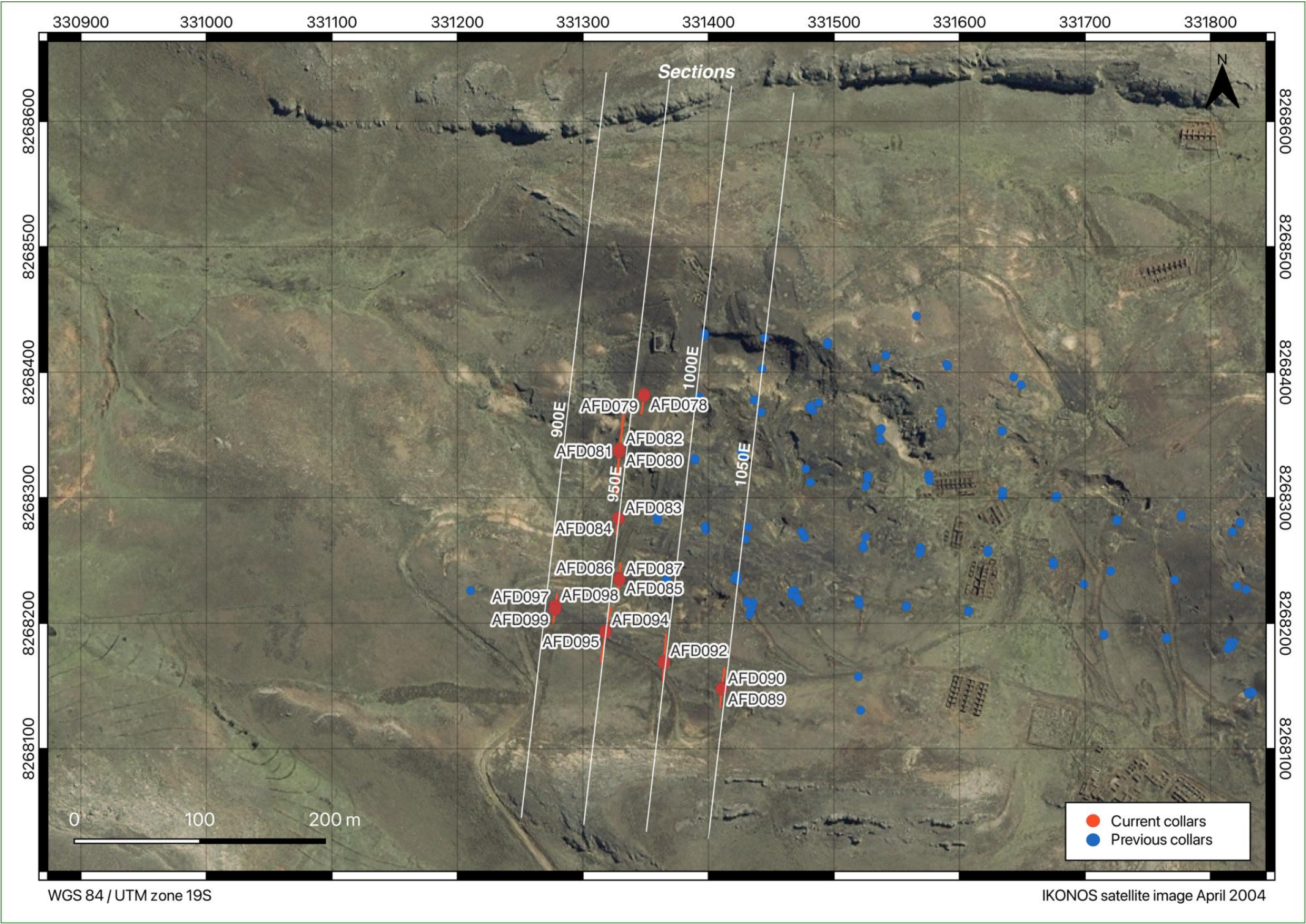
Section 1050E - Mn

- Current collars
- Previous collars



WGS 84 / UTM zone 19S

IKONOS satellite image April 2004



330900 331000 331100 331200 331300 331400 331500 331600 331700 331800

8268600
8268500
8268400
8268300
8268200
8268100

8268600
8268500
8268400
8268300
8268200
8268100

Sections



0 100 200 m

- Current collars
- Previous collars

WGS 84 / UTM zone 19S

IKONOS satellite image April 2004